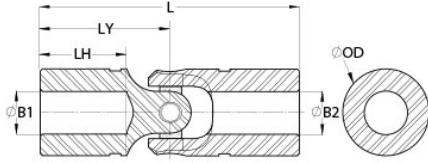




USC12-6-6-SS

Ruland USC12-6-6-SS, 3/8" x 3/8" Single Universal Joint, Needle Bearing, Stainless Steel, 0.745" OD, 2.688" Length



Description

Ruland USC12-6-6-SS is a single cardan needle bearing universal joint with 0.3750" x 0.3750" bores, 0.745" OD, and 2.688" length. It is ideal for applications where higher accuracy, service life, and speed are required. This needle bearing universal joint is comprised of needle roller bearings, precision machined trunnions with hardened and ground journals, and two yokes for reduced friction and increased performance in high performance applications. USC12-6-6-SS is designed for use in high RPM applications up to 6000 RPM and has extended service life due to pre-lubricated maintenance free bearings. It is made from high grade stainless steel for increased corrosion resistance. When combined with boot UBOOT12/19-NI-KIT the joint is protected from unwanted contaminants such as dust or water and self lubricates reducing maintenance time. This single cardan universal joint is manufactured in the USA by Belden Universal for strict control of processes.

Product Specifications

Bore (B1)	0.3750 in	Small Bore (B2)	0.3750 in
B1 Max Shaft Penetration	0.950 in	B2 Max Shaft Penetration	0.950 in
Joint Outer Diameter (OD)	0.745 in	Bore Tolerance	+0.0010 in / -0.0000 in
Length (L)	2.688 in	Yoke Length (LY)	1.344 in
Hub Depth (LH)	0.950 in	Max Operating Angle	45°
Material Specification	Yokes: 303 Stainless Steel Pins and Blocks: 416 Stainless Steel	Manufacturer	Belden Universal
Country of Origin	USA	Weight (lbs)	0.214000
Recommended Lubricant	LUBRIPLATE No. 1200-2	Matching Boot Cover	UBOOT12/19-NI-KIT
UPC	634529290293	Tariff Code	8483.60.4000
UNSPC	25173810		
Note 1	Performance ratings are for guidance only. The user must determine suitability for a particular application.		
Prop 65	⚠️ WARNING This product can expose you to the chemical Nickel (metallic), known to the State of California to cause cancer. For more information go to www.P65Warnings.ca.gov .		